

FLOW CONTROL VALVES

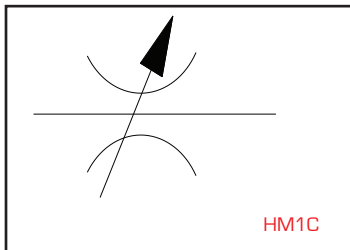


Working pressure 700 Bar

3/8" -18 NPT connections

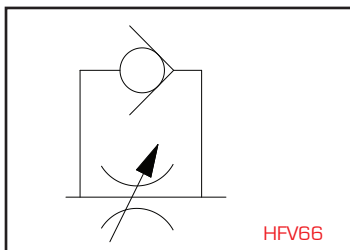
Ensures system safety and control

D



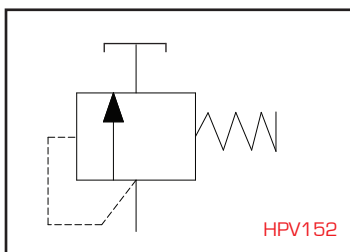
Manual shut off valve with needle type flow control. Used for load holding and throttling functions. Can also be used as a gauge isolator.

Dimensions in mm			
Model Number	Height	Length	Width
HM1C	82	64	38



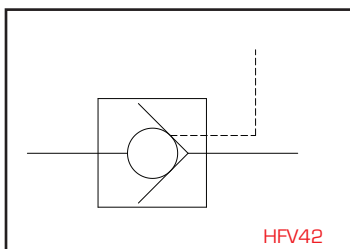
Manual check valve used for automatic load locking, with precise manual load lowering feature.

Dimensions in mm			
Model Number	Height	Length	Width
HFV66	86	75	47



Adjustable pressure relief valve, for pressure setting from 55 to 700 Bar. Supplied complete with return line hose.

Dimensions in mm			
Model Number	Height	Length	Width
HPV152	102	64	32



Pilot operated check valve used as a safety valve for double acting cylinders. Pilot port connects to cylinder retract line.

Dimensions in mm			
Model Number	Height	Length	Width
HFV42	84	64	32